



INSTALL CONFIDENCE



FLOOR CEILING TYPE R-410A 50HZ COOLING ONLY
YFFN(18-55)BZNRZTH1

FLOOR CEILING TYPE R-410A 50HZ COOLING ONLY

Indoor Unit

- Ceiling and wall installation option
- Horizontal and vertical air swing
- Low noise
- Washable air filter
- High velocity air flow
- Auto-restart
- 2-way Drainage
- Fresh air intake (Optional)
- Drain pump (Optional)
- Wired controller (Optional)



Remote Control

- 4 operation mode(Cooling/Auto/Fan/Dry)
- On/off timer
- Temperature setting
- Clock display
- SUPER Mode for fast cooling
- IFEEL Mode for intelligent environment temperature sensing
- SMART Mode for optimized temperature and fan speed setting
- QUIET Mode for quiet operation



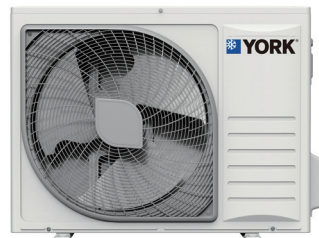
JCRA31NEWH
(Standard)



JCSA21NEWH
(Optional)

Condensing Unit

- Compact size
- More sturdy and durable
- High efficiency compressor
- Easier installation
- Easier maintenance



The YORK® line of Floor Ceiling Type Air Conditioner includes a wide range of sizes to meet many customers' needs. Each model is designed to provide comfort and efficiency, in an easy-to-operate unit and flexible installation makes them an easy fit for a variety of applications. Models meet the highest energy efficiency ratings, so less energy is consumed without sacrificing comfort and performance. Both the condensing and indoor units are engineered for quiet operation. And comfort control settings are easily changed with the touch of a button on the remote control.

FLOOR CEILING TYPE R-410A 50HZ COOLING ONLY

Features and benefits



Multi-Speed Fan

Multi-speed fan helps satisfy various airflow requirements.



Washable Filter

Washable filter allows for convenient service and maintenance.



24-Hour Timer

Allows programmed start times up to 24 hours in advance for flexible and more convenient operation.



Auto Restart

Unit is automatically returned to previous operating conditions after a power outage, for simplified operation.



4-Way Airflow

Front air deflectors are adjustable for horizontal or vertical airflow. Airflow can be directed to air condition the whole room or even a particular point providing for better comfort.

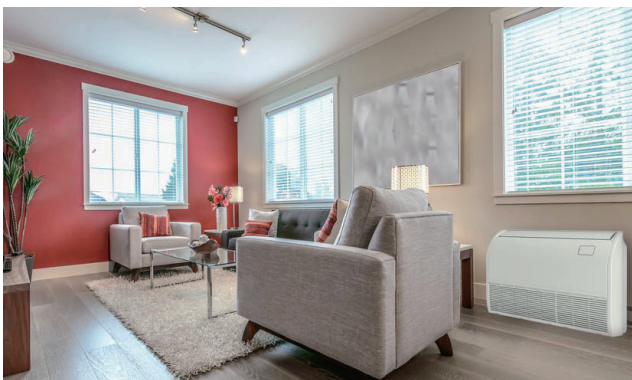


Self Diagnosis

Clearly displayed failure codes allow for quicker troubleshooting and easier maintenance.

Flexible for installation

Floor installation and ceiling suspended installation allows users great flexibility to choose most optimized configuration for air conditioning needs.



Floor Installation



Ceiling Installation

Specification

York set model		YFFN18BZNRZTH1	YFFN24BZNRZTH1	YFFN36BZMRZTH1	YFFN48BZMRZTH1	YFFN55BZMRZTH1	
York indoor model		YFFN18BXNRZTH1	YFFN24BXNRZTH1	YFFN36BXNRZTH1	YFFN48BXNRZTH1	YFFN55BXNRZTH1	
York outdoor model		YUFN18BYNNZTH1	YUFN24BYNNZTH1	YUFN36BYMNZTH1	YUFN48BYMNZTH1	YUFN55BYMNZTH1	
Power supply	V-ph-Hz	220-240-1-50	220-240-1-50	380-415-3-50	380-415-3-50	380-415-3-50	
Max. input consumption	W	2405	3255	4272	6479	8234	
Max. input current	A	11.0	15.5	8.9	12.1	16.6	
Cooling	Capacity	W	4689	6536	9648	12869	14613
	Capacity	Btu/h	16000	22300	32920	43910	49860
	Input	W	1790	2430	3483	4564	5412
	Current	A	7.5	10.2	7.1	8.8	10.0
	COP	W/W	2.62	2.69	2.77	2.82	2.70
Indoor fan motor	Qty		1	1	1	1	
	Input	W	73	175	229.0	243.0	243.0
	Capacitor	µF	2	5	8	8.0	8.0
	Speed(Hi/Med/Lo)	r/min	850/720/630	1280/1100/920	1260/1130/1000	1200/1100/1000	1200/1100/1000
Indoor air flow Rated(Hi/Med/Lo)	m ³ /h	800/700/600	1400/1100/900	1700/1650/1500	2000/1800/1600	2000/1800/1600	
Indoor air flow Rated(Hi/Med/Lo)	CFM	470/412/353	824/647/529	1000/971/882	1176/1058/941	1176/1058/941	
Indoor noise level (Hi/Med/Lo)	dB(A)	41/38/36	52/50/46	57/54/52	53/52/50	53/52/50	
Indoor unit	Dimension (WxDxH)	mm	990x680x230	990x680x230	1285x680x230	1580x680x230	1580x680x230
	Packing(WxDxH)	mm	1100x820x350	1100x820x350	1400x820x350	1690x820x350	1690x820x350
	Net/Gross weight	kg	28/35	30/36	40/47	46/54	46/54
Drainage water pipe diameter	mm	ODØ25	ODØ25	ODØ25	ODØ25	ODØ25	
Refrigerant piping	Liquid side/ Gas side	mm	Ø6.35/Ø12.7(1/4"/1/2")	Ø9.52/Ø15.88(3/8"/5/8")	Ø9.52/Ø19(3/8"/3/4")	Ø9.52(3/8")/Ø19.05(3/4")	Ø9.52(3/8")/Ø19.05(3/4")
Controller			Remote Controller (standard) Wired Controller (option)				
Operation temperature	°C	16~30	16~30	16~30	16~30	16~30	
Qty'per 20' /40' /40'HQ	Indoor	84/168/196	84/168/196	66/132/154	42/84/98	42/84/98	
Compressor	Type		ROTARY	ROTARY	ROTARY	ROTARY	
	Capacity	Btu/h	15883	23440	33711	47597	55786
	Input	W	1540	2290	3280	4650	5450
	Rated current(RLA)	A	7.2	11.4	5.9	7.8	9.2
	Locked rotor Amp(LRA)	A	46	61	38	67	65
	Thermal protector position		INTERNAL	INTERNAL	INTERNAL	INTERNAL	INTERNAL
	Capacitor	µF	50	50	/	/	/
	Refrigerant oil	ml	ATMOS-RB68EP/600	α 68HES-H/570	α 68HES-H/2600	α 68HES-H/1600	α 68HES-H/1600
Outdoor fan motor	Qty		1	1	1	2	2
	Input	W	41	118	160	74	145
	Capacitor	µF	3	4	6	3	4
	Speed	r/min	910	880/830/540	880/740/660	900/800/700	700/600/500
Outdoor noise level (sound pressure)	dB(A)	54	56	62	55	58	
Throttle type		Throttle Valve	Throttle Valve	Throttle Valve	Capillary	Capillary	
Outdoor unit	Dimension(WxDxH)	mm	810x280x585	860x665x310	885x795x366	950x1050x340	950x1386x340
	Packing(WxDxH)	mm	940x420x640	990x730x450	1050x890x500	1110x1200x460	1110x1530x460
	Net/Gross weight	kg	42/45	51/56	67/71	96/103	106/116
Refrigerant type/Quantity	Type		R410A	R410A	R410A	R410A	R410A
	Charged volume	kg	1.30	1.58	2.60	2.40	3.10
Design pressure	MPa	4.8/1.6	4.8/1.6	4.8/1.6	4.15/1.5	4.15/1.5	
Refrigerant piping	Liquid side/ Gas side	mm(inch)	Ø6.35/Ø12.7(1/4"/1/2")	Ø9.52/Ø15.88(3/8"/5/8")	Ø9.52/Ø19(3/8"/3/4")	Ø9.52/Ø19.05(3/8"/3/4")	Ø9.52/Ø19.05(3/8"/3/4")
	Max. pipe length	m	20	30	30	50	50
	Max. difference in level	m	15	15	20	30	30
Ambient temperature	Cooling	°C	-15-43	-15-43	-15-43	-15-43	-15-43
Qty'per 20' /40' /40'HQ	Outdoor unit		102/204/272	90/186/186	44/92/96	26/53/106	26/53/53

Nominal test conditions:

Cooling - Indoor 80.6°F DB / 66.2°F WB (27°C DB / 19°C WB) & Outdoor 95°F DB / 75.2°F WB (35°C DB / 24°C WB)



Johnson Controls, the Johnson Controls logo, YORK are registered trademarks of Johnson Controls, Inc in the United States of America and other countries. Other trademarks used herein may be trademarks or registered trademarks of other companies.

FOR MORE INFORMATION CONTACT JOHNSONCONTROLS.COM

© 2017 Johnson Controls, Inc, P.O. Box 423, Milwaukee, WI 53201, All rights reserved worldwide.

YFFN(18-55)BZNRZTH1-17908