



INSTALL CONFIDENCE

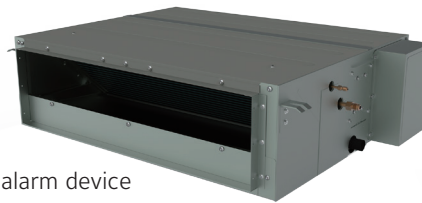


COMPREHENSIVE RANGE OF DUCTED SPLIT TYPE
T1 50HZ R-410A COOLING ONLY
YA(G)FN(9-55)BZNWZTH1

COMPREHENSIVE RANGE OF DUCTED SPLIT TYPE T1 50HZ R-410A COOLING ONLY

Indoor Unit

- Built-in drain pump
- Quiet operation
- Easy cleaning and installation
- Flexible air return from bottom or back
- Smooth air flow
- Durable and galvanised structure
- Expansion interface for key slot and smoke alarm device
- Adjustable ESP



24k



9-18k



36-55k

Wired Controller

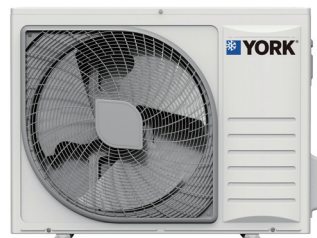
- 4 Operation mode: Cooling/Fan/Dry/Auto
- Fan speed:High/Mid/Low/Auto
- 24-hour On/Off Timer
- Temperature setting
- Clock display
- Key lock function
- Service & Error code display



JCSA21NEWH
(Standard)

Condensing Unit

- Stylish design
- High flexibility & easy installation
- High efficiency compressor
- Enhanced heat exchanger



The YORK[®] Comprehensive line of Ducted Split Type Air Conditioner includes a wide range of sizes to give you more flexibility in your product offering. Each model is designed to provide comfort and efficiency, in an easy-to-operate unit and the sleek design fits a variety of spaces, whether it's in a home or office. Models meet the highest energy efficiency ratings, so less energy is consumed without sacrificing comfort and performance. Both the condensing and indoor units are engineered for quiet operation. And comfort control settings are easily changed with the touch of a button on the remote control.

COMPREHENSIVE RANGE OF DUCTED SPLIT TYPE T1 50HZ R-410A COOLING ONLY

Features and Benefits



24-Hour Timer

Allows programmed start times up to 24 hours in advance for flexible and more convenient operation.



Multi-Speed Fan

Multi-speed fan helps satisfy various airflow requirements.



Turbo Mode

Provide quicker cooling with easy setting in controller.



Auto Mode

Enable optimized thermal comfort for users with easy access



Auto Restart

Unit is automatically returned to previous operating conditions after a power outage, for simplified operation.



Self Diagnosis

Clearly displayed failure codes allow for quicker troubleshooting and easier maintenance.



Inner Groove Copper Tube

Inner groove copper tubing allows more refrigerant to pass through, improving heat exchange by 30 to 50% when compared to traditional copper tubing, and lowering power consumption while keeping output capacity at the same level.

Specification

York set model		YAFN09BZNWZTH1	YAFN12BZNWZTH1	YAFN18BZNWZTH1	YEFN24BZNWZTH1	YEFN36BZMWZTH1	YGFN48BZMWZTH1	YGFN55BZMWZTH1	
York indoor model		YAFN09BXNWZTH1	YAFN12BXNWZTH1	YAFN18BXNWZTH1	YEFN24BXNWZTH1	YEFN36BXNWZTH1	YGFN48BXNWZTH1	YGFN55BXNWZTH1	
York outdoor model		YUFN09BYNNZTH1	YUFN12BYNNZTH1	YUFN18BYNNZTH1	YUFN24BYNNZTH1	YUFN36BYMMNZTH1	YUFN48BYMMNZTH1	YUFN55BYMMNZTH1	
Power supply	V-ph-Hz	220-240-1-50	220-240-1-50	220-240-1-50	220-240-1-50	380-415-3-50	380-415-3-50	380-415-3-50	
Max. input consumption	W	1800	1800	2460	3250	4321	6479	8234	
Max. input current	A	10.0	10.0	10.20	15.5	9.0	12.1	16.6	
Cooling	Capacity	W	2989	3277	4686	6829	10258	13113	14692
	Capacity	Btu/h	10200	11180	15990	23300	35000	44740	50130
	Input	W	1076	1162	1775	2439	3703	4967	5830
	Current	A	5.1	5.1	7.5	10.2	6.9	8.8	10
	EER	W/W	2.78	2.82	2.64	2.80	2.77	2.64	2.52
Indoor fan motor	Qty		1	1	1	1	1	1	
	Input	W	70	70	83	226	209	558	558
	Capacitor	µF	3.0	3.0	2.5	6.0	10.0	10.0	10.0
	Speed(Hi/Med/Lo)	r/min	955/700/655	955/700/655	1280/1130/1070	910/830/730	917/821/787	1000/900/830	1000/900/830
Indoor air flow Rated(Hi/Med/Lo)	m3/h	650/470/450	650/470/450	750/670/630	1100/1000/900	1800/1650/1500	2000/1800/1600	2000/1800/1600	
Indoor air flow Rated(Hi/Med/Lo)	CFM	382/276/265	382/276/265	441/394/371	647/588/529	1059/971/882	1176/1058/941	1176/1058/941	
ESP	Rated	Pa	10	10	10	50	50	80	80
	Range	Pa	10/30	10/30	10/30	50/80	50/80	80/120	80/120
Indoor noise level (Hi/Med/Lo)	dB(A)	34/29/28	34/31/29	38/36/35	42/40/38	40/38/37	46/44/42	46/44/42	
Indoor unit	Dimension (WxHxD)	mm	900×190×447	900×190×447	900×190×447	900×270 ×720	1300×350×800	1300×350×800	1300×350×800
	Packing(WxHxD)	mm	1110×460×910	1110×460×910	1070×236×580	1170X340X870	1550×410×940	1550×410×940	1550×410×940
	Net/Gross weight	kg	19/25	19/25	19/25	30/35	54/62	54/62	54/62
Drainage water pipe diameter	mm	ODØ32	ODØ32	ODØ32	ODØ32	ODØ32	ODØ32	ODØ32	
Refrigerant piping	Liquid side/ Gas side	mm	Ø6.35/ Ø12.7(1/4"/1/2")	Ø6.35/ Ø12.7(1/4"/1/2")	Ø6.35/ Ø12.7(1/4"/1/2")	Ø9.52/ Ø15.88(3/8"/5/8")	Ø9.52/Ø19(3/8"/3/4")	Ø9.52/Ø19(3/8"/3/4")	Ø9.52/Ø19(3/8"/3/4")
Controller			Wired control	Wired control	Wired control	Wired control	Wired control	Wired control	
Operation temperature	°C	16~30	16~30	16~30	16~30	16~30	16~30	16~30	
Qty/per 20' /40' /40'HQ	Indoor	200/440/484	200/440/484	200/440/484	84/182/182	35/75/90	35/75/90	35/75/90	
Compressor	Type		ROTARY	ROTARY	ROTARY	ROTARY	ROTARY	ROTARY	
	Capacity	Btu/h	13136	13136	15883	23440	33711	47597.4	55786.2
	Input	W	900	900	1540	2290	3280	4650	5450
	Rated current(RLA)	A	4.1	4.1	7.2	11.4	5.90	7.8	9.20
	Locked rotor Amp(LRA)	A	25	25	46	61	38.0	67	65.0
	Thermal protector position		INTERNAL	INTERNAL	INTERNAL	INTERNAL	INTERNAL	INTERNAL	INTERNAL
	Capacitor	µF	35	35	50	50	/	/	/
Refrigerant oil	ml	VG74 /350	VG74 /350	ATMOS-RB68EP/600	α 68HES-H/570	α 68HES-H/2600	α 68HES-H/1600	α 68HES-H/1600	
Outdoor fan motor	Qty		1	1	1	1	2	2	
	Input	W	25	25	41	118	160	74	145
	Capacitor	µF	1.5	1.5	3	4	6	3.0	4
	Speed	r/min	850	850	910	880/830/540	880/740/660	900/800/700	700/600/500
Outdoor noise level (sound pressure)	dB(A)	55	55	54	56	62	55	58	
Throttle type		Throttle Valve	Throttle Valve	Throttle Valve	Throttle Valve	Capillary	Capillary	Capillary	
Outdoor unit	Dimension(WxHxD)	mm	715×482×240	715×482×240	810×280×585	860×665×310	885×795×366	950x1050x340	950x1386x340
	Packing(WxHxD)	mm	830x530x315	830x530x315	940×420×640	990×730×450	1050×890×500	1110x1200x460	1110x1530x460
	Net/Gross weight	kg	28/30	28/30	42/45	51/56	67/71	96/103	106/116
Refrigerant type/ Quantity	Type		R410A	R410A	R410A	R410A	R410A	R410A	R410A
	Charged volume	kg	0.85	0.85	1.30	1.58	2.60	2.40	3.10
Design pressure	MPa	4.15/1.6	4.15/1.6	4.8/1.6	4.8/1.6	4.8/1.6	4.15/1.5	4.15/1.5	
Refrigerant piping	Liquid side/ Gas side	mm(inch)	Ø6.35/ Ø12.7(1/4"/1/2")	Ø6.35/ Ø12.7(1/4"/1/2")	Ø6.35/ Ø12.7(1/4"/1/2")	Ø9.52/ Ø15.88(3/8"/5/8")	Ø9.52/ Ø19.05(3/8"/3/4")	Ø9.52(3/8")/ Ø19.05(3/4")	Ø9.52(3/8")/ Ø19.05(3/4")
	Max. pipe length	m	15	15	20	30	30	50	50
	Max. difference in level	m	7.5	7.5	15	15	20	30	30
Ambient temperature	Cooling	°C	15-43	15-43	-15-43	-15-43	-15-43	-15-43	
Qty/per 20' /40' /40'HQ	Outdoor unit		204/412/520	204/412/520	102/204/272	90/186/186	44/92/96	26/53/106	26/53/53

Nominal test conditions:

Cooling - Indoor 80.6°F DB / 66.2°F WB (27°C DB / 19°C WB) & Outdoor 95°F DB / 75.2°F WB (35°C DB / 24°C WB)



Johnson Controls, the Johnson Controls logo, YORK are registered trademarks of Johnson Controls, Inc in the United States of America and other countries. Other trademarks used herein may be trademarks or registered trademarks of other companies.

FOR MORE INFORMATION CONTACT JOHNSONCONTROLS.COM

© 2017 Johnson Controls, Inc, P.O. Box 423, Milwaukee, WI 53201, All rights reserved worldwide.

YA(G)FN(9-55)BZNWZTH1-170908